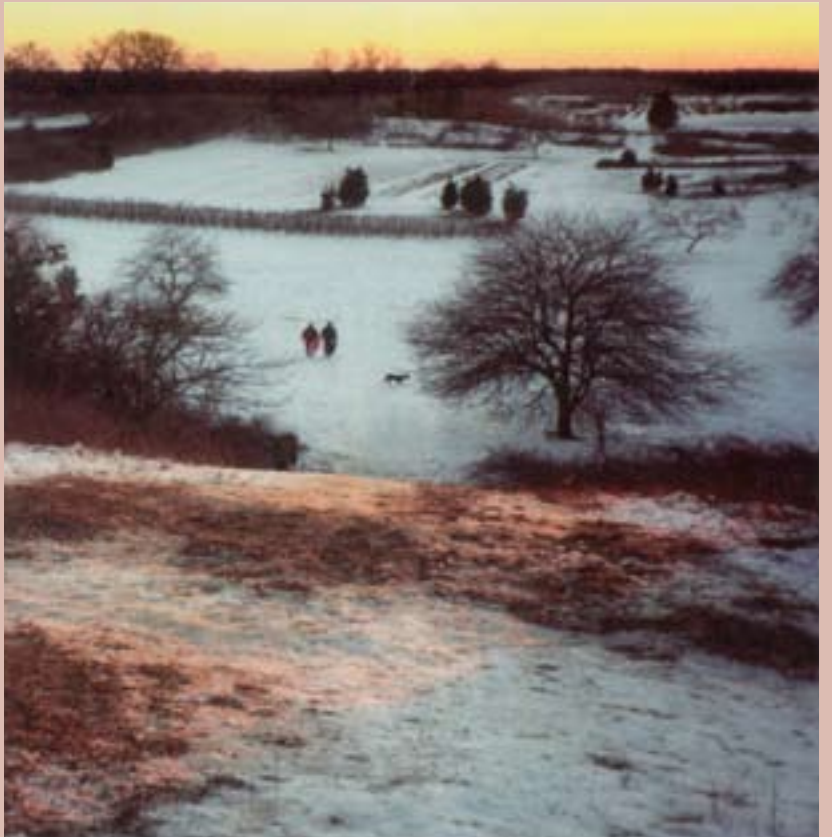


Nos. 70-71
Autumn-Winter 2010-2011
Free Internet Sample

Light



A Quarterly of Light Verse



Special Double Issue

Dan Champion, David Yezzi, Katherine B. Smith,
J. Patrick Lewis, John Morgan, Mary Meriam,
Joyce La Mers, Jim Fisher, Colette Inez,
Max Gutmann, Fred Yannantuono, Darby Tench

Featured Poet: Charles Gould

LIGHT

The Foundation For Light Verse, Inc.
PO Box 7500
Chicago, Illinois 60680-7500

RATES:

\$24	1 YEAR (4 ISSUES)
\$36	2 YEARS (8 ISSUES)
\$40	1 YEAR INTERNATIONAL (4 ISSUES)
\$ 7	SINGLE COPY / \$7 CANADA
\$ 2	FIRST CLASS POSTAGE FOR CURRENT/BACK ISSUES PER COPY

INSTITUTIONAL PRICING

\$30 4 ISSUES

THESE ARE THE AMOUNTS PAYABLE TO LIGHT QUARTERLY. ANY ADDITIONAL COMMISSION IS TO BE CHARGED TO THE INSTITUTION.

Email: info@foundationforlightverse.org
Web: www.lightquarterly.org

© 2011 ALL RIGHTS RESERVED LIGHT - A QUARTERLY OF LIGHT VERSE

A MATTER OF PRECEDENCE

To put the cart before the horse
Is said to be unwise. Of course,
One's speed is less, that much is true,
But what about the driver's view?

—JOYCE LA MERS



THE JEST OF ALL POSSIBLE WORLDS

“Of all the worlds there is a best,
As all waves surely have a crest.”
(And as with waves, which move to live,
The “top” slot's always relative.)

—DAN CAMPION

GOING BY FEEL

Applying lipstick without a mirror
prepares a woman for
making love in the dark
and even anticipates
nursing a baby under a shawl.

—JANE BLANCHARD



INSOMNIA

Though sleepless, I am risk-averse.
I toss and turn; it could be worse.
I could be stumbling through the mist,
an Ambien-dazed somnambulist,
wearing pajamas in the street
and splashing through puddles with bare feet.
I could be gorging mindlessly
or driving blindly toward a tree.
I'll take insomnia instead:
still wide awake, but safe in bed.

—SUSAN MCLEAN

A DUO OF LIMERICKS

Clock Limerick

Three days after buying a clock
I couldn't induce it to tock.
Nor cared it a lick
In having to tick.
A sundial's now nothing to mock.

Calculus Limerick

I always have been a proponent
Of calculus as subcomponent.
To measure Bernoulli's
Unduly unruly
Equations requires an exponent.
—FRED YANNANTUONO



HUMMINGBIRD

Late summer hummingbirds
flock to the phlox and hollyhocks
the rose of sharon by the fence.

The hummingbird is a bird absurd,
a speed that shocks, a form that mocks
gravity and common sense.

—SHERRY CHANDLER

THE PLATYPUS

The Platypus is small and furred
and lays eggs like a little bird
but has no wings and cannot fly.
Its eggs hatch into Platypi.

—JOYCE LA MERS

